

The brands of the BPW Group:



ERMAX®

HBN-Teknik<sub>vs</sub>

HESTAL®

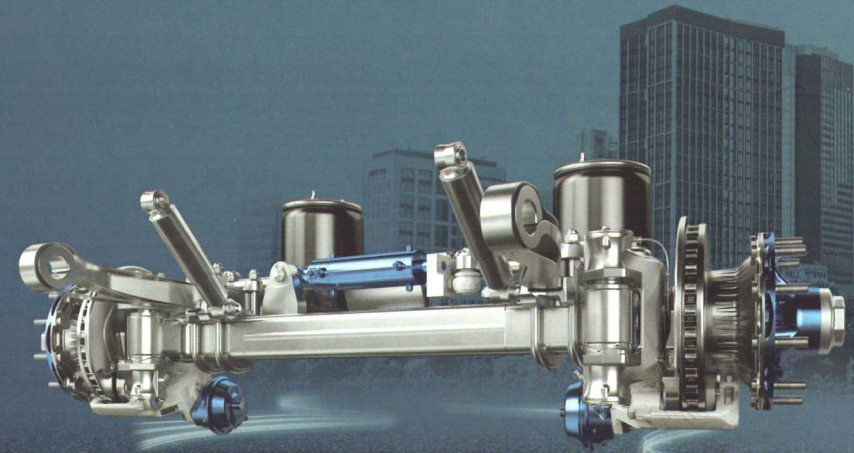
idem  
telematics

we think transport



# MASTER OF MANOEUVRING.

BPW Active Reverse Control



BPW Active Reverse Control 18811901 e conception GmbH

**BPW Bergische Achsen Kommanditgesellschaft**

Postbox 12 80 · 51656 Wiehl, Germany · Telephone +49 (0) 2262 78-0

info@bpw.de · [www.bpw.de](http://www.bpw.de)

# The new, clever auxiliary steering system for your self-steering axle.

As an operator and driver of semi-trailers, you have benefitted from the economic and technical advantages of the BPW self-steering axle for decades. Simpler manoeuvring with the self-steering axle also makes operation more economical, reducing both tyre wear and fuel consumption. At an annual mileage of 100,000 kilometres, it is possible to save around 1,000 litres of diesel and four tyres – thanks to improved cornering performance.

For functional reasons, however, these benefits have up until now only been realised during forward travel. When reversing, the steering mechanism is locked and the axle remains rigid. But from now on, you can benefit from all the advantages of the self-steering axle – even when reversing and manoeuvring. With BPW Active Reverse Control, BPW has developed a new electro-hydraulic auxiliary steering system that automatically controls the steering axle when reversing at speeds of up to 10 km/h.

Increase the agility and manoeuvrability of your vehicles when reversing and reduce time and tyre wear.

## IMPRESSIVE BENEFITS

- You save time thanks to plug-and-play installation of the prepared axles.
- You do not need a separate approval.
- You can use Active Reverse Control independently of the EBS system.
- You can transport higher loads due to the lower unladen weight.
- The system can be used to control two steering axles (Four axles are even possible with agricultural vehicles).

THE BPW EFFECT  
1,000 l  
Fuel savings as well as fast and safe manoeuvring

## TECHNICAL DATA

<b>Axle load</b>	9 – 10 t / 12 t*	<b>Control</b>	electronic
<b>Axle</b>	BPW LL axles ex works	<b>Transmission</b>	hydraulic
<b>Brake type</b>	disc / drum*, 22,5 / 17,5**	<b>Angle sensor</b>	innovative sensor technology in the control unit (no angle sensor required on the King pin)
<b>Suspension</b>	air suspension	<b>Number of steerable axles</b>	max. 2
<b>Steering system approval</b>	not required	<b>Steering angle</b>	up to 18 degrees (27 degrees*)
<b>Usage area</b>	commercial / agricultural	<b>System weight</b>	58 kg (incl. control unit)
<b>Application</b>	driving in reverse / manoeuvring operations (V < 10 km/h)	<b>Vehicle installation</b>	plug and play (cylinders and sensors ex works pre-mounted)

\* available end of 2019